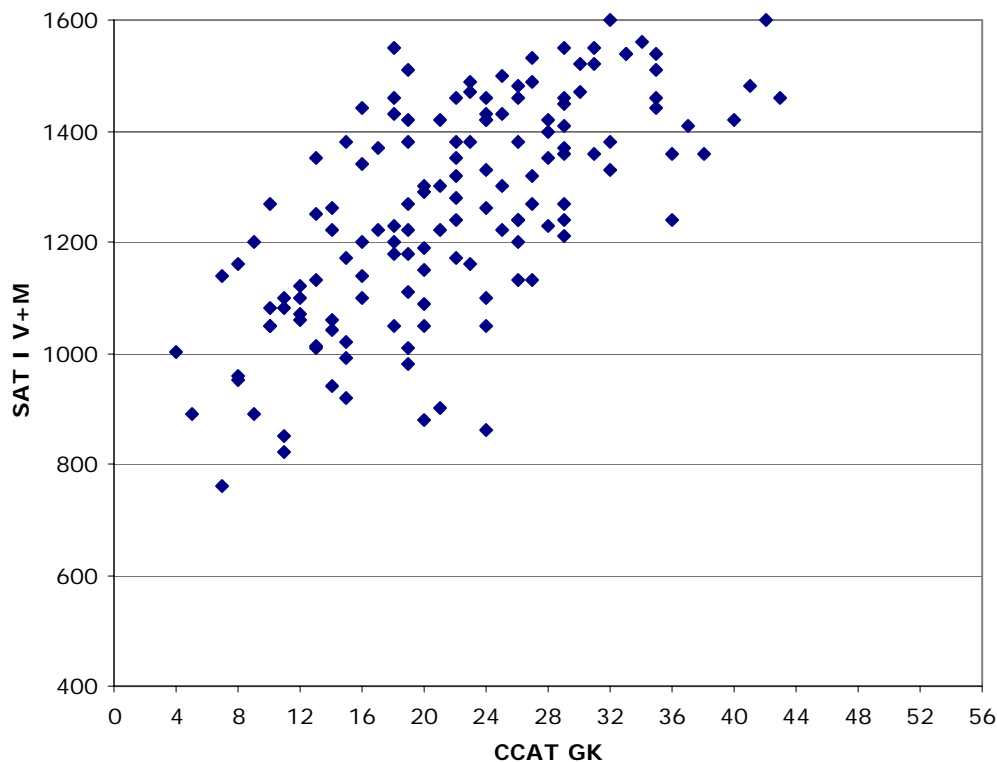




GK to SAT® I Comparison

The Scholastic Aptitude Test (SAT® I)¹ is an objective, standardized, three-hour test that measures verbal and mathematical reasoning abilities that students develop over time, both in and out of school. Many colleges and universities use the SAT® for admission purposes because it helps to predict successful performance in college.

The SAT® is divided into two sections, (i) a verbal one with emphasis on critical reading in which vocabulary is tested in the context of reading passages and in analogy and sentence-completion questions and (ii) a mathematics one with emphasis on data interpretation and applied math questions in which calculators are permitted but not required.



Points to Note:

- The Pearson correlation between the two measures is .71 ($p < .005$) once corrected for range restriction².
- The SAT® I sample consists of 141 self-reported scaled scores.

¹ <http://www.collegeboard.com>

² McNemar, O. (1949). *Psychological statistics*. New York: Wiley.